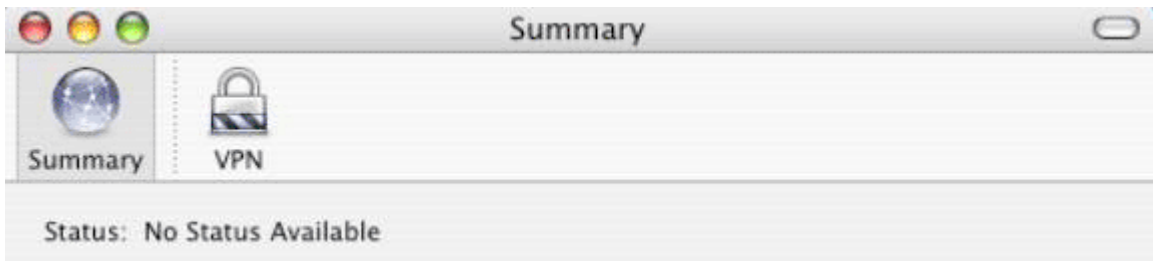


VPN Connection OS X.3 Panther Setup

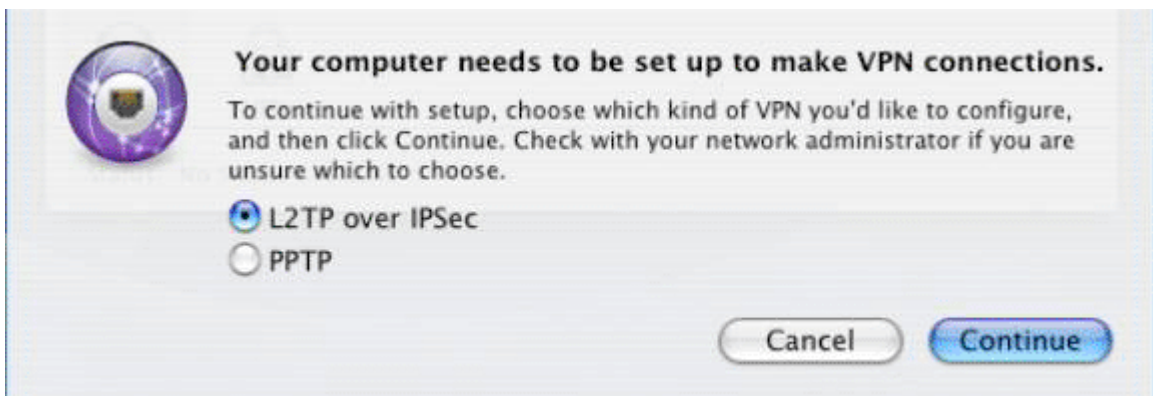
1. Open the **Applications** on your Hard Drive and look for the **Internet Connect** Icon pictured below:



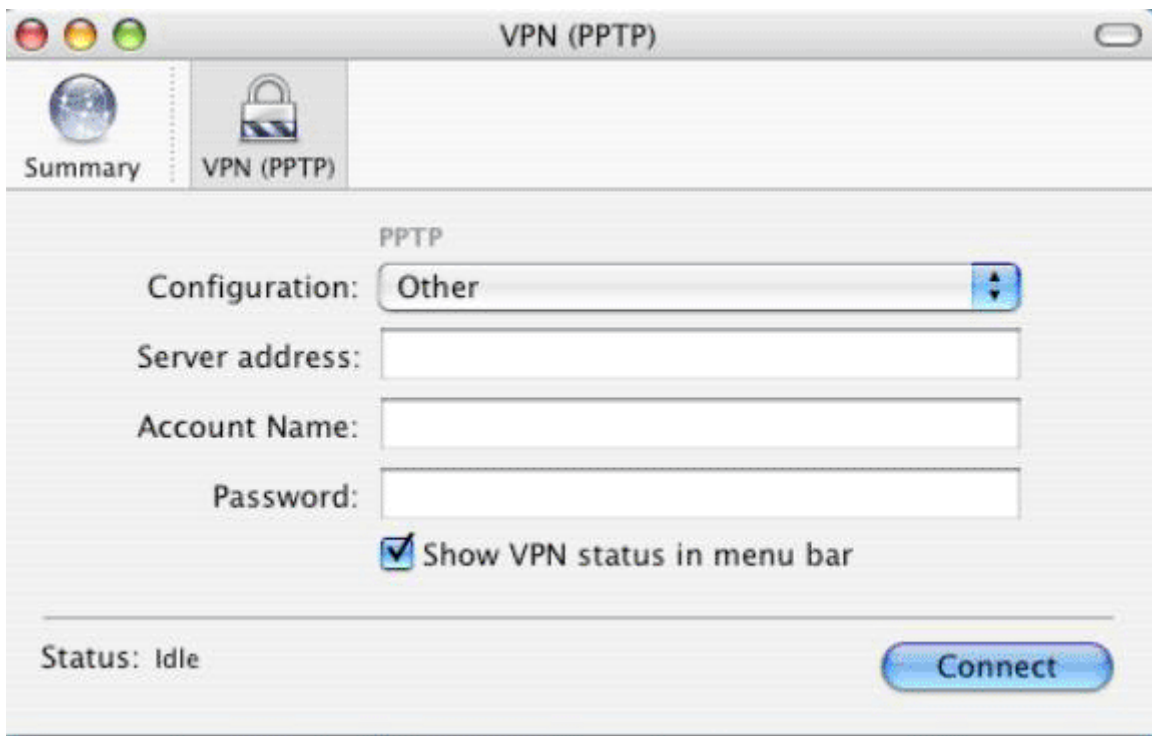
2. Open Internet Connect and you will be greeted by the following screen:



3. You will want to click on the **VPN** icon in the toolbar after which you will be given a choice as to what type of VPN you will be using. Choose PPTP, then click **Continue**.



4. After clicking continue, you will be presented with the following configuration screen, which will ask for username/password and the server address.



The server address is : **199.18.239.3**

Your account name is the same as your login for your email as well as your password.

5. Now you may go to **Connect to Server** and access your network locations.

January 20, 2004